



Tara H. Jackson  
Acting County Executive



Michael D. Johnson, P.E.  
Director

# Pedestrian and Bicycle Safety Emphasis Area Team Meeting

December 12, 2024, 1:00 PM

MDOT SHA's District 3 Office  
9300 Kenilworth Ave.  
Greenbelt, MD 20770

Safe Streets and Roads for All  
Proud to Pave the Way  
Multi-Modal Projects on the High Injury Network





Tara H. Jackson  
Acting County Executive

# OVERVIEW



Michael D. Johnson, P.E.  
Director

- SS4A Grant
- 7 sub-projects
- Proposed Improvements
- Q&A Session





Tara H. Jackson  
Acting County Executive

# SS4A



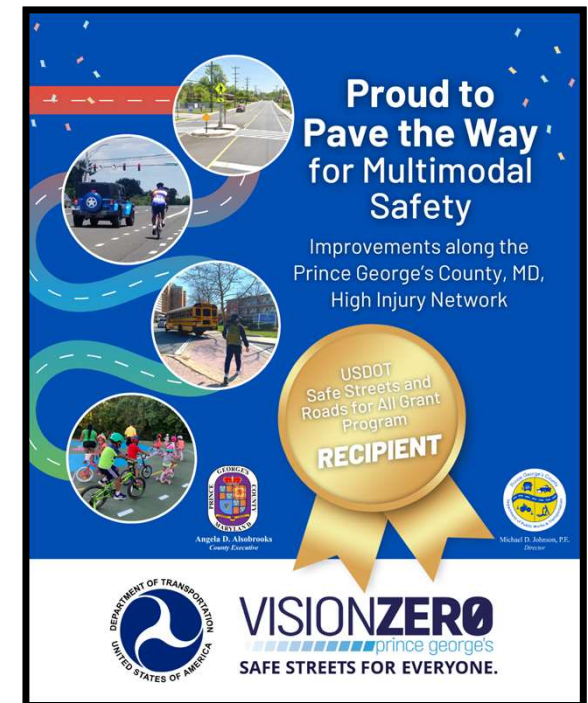
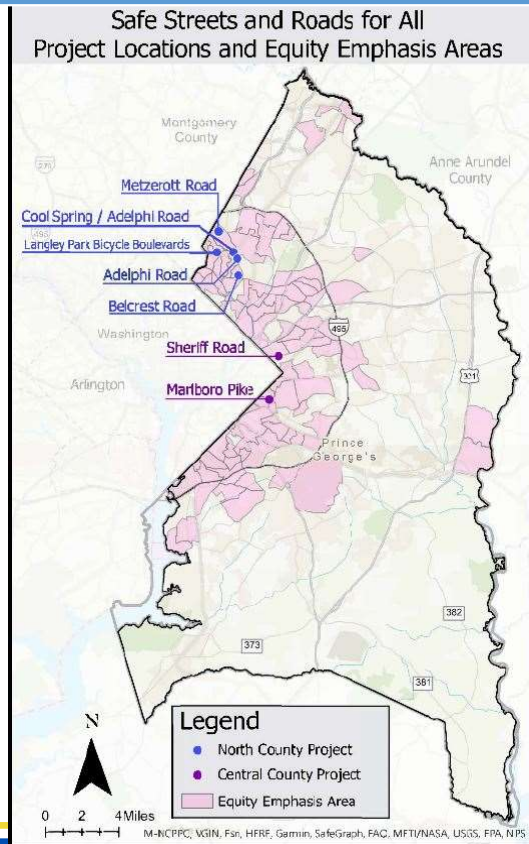
Michael D. Johnson, P.E.  
Director

## Safe Streets and Roads for All Grant (SS4A)

- Location: Countywide
- Project Locations In:  
Langley Park, College Park, Hyattsville,  
Fairmont Heights, Coral Hills
- Project Phase:  
15%-100% Design
- Project Group Cost:  
\$30.6M
- Award Amount:  
\$21.2M

Since 2023 DPW&T has Processed the Grant Agreement as a Direct Recipient. We have also received ROW Certification and NEPA Certification on a sub-project. Marlboro Pike Phase 2 was awarded for construction in 2024.

[>>>>Vision Zero Webpage](#)







Tara H. Jackson  
Acting County Executive

# SS4A



Michael D. Johnson, P.E.  
Director

## Direct Recipient from FHWA

- Helpful guidance and direction from FHWA
- Confidence
- Flexibility
- Delivery







Tara H. Jackson  
Acting County Executive



Michael D. Johnson, P.E.  
Director

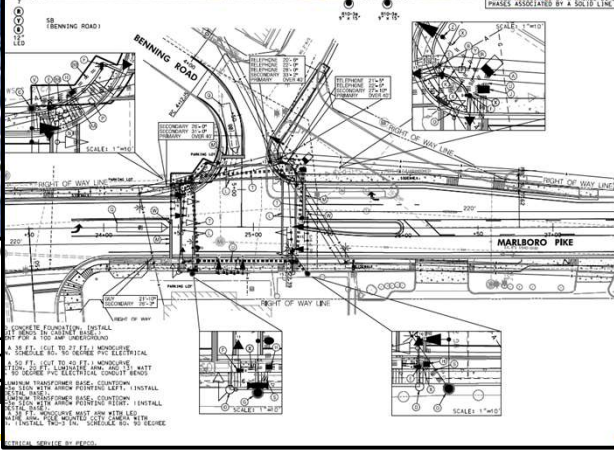
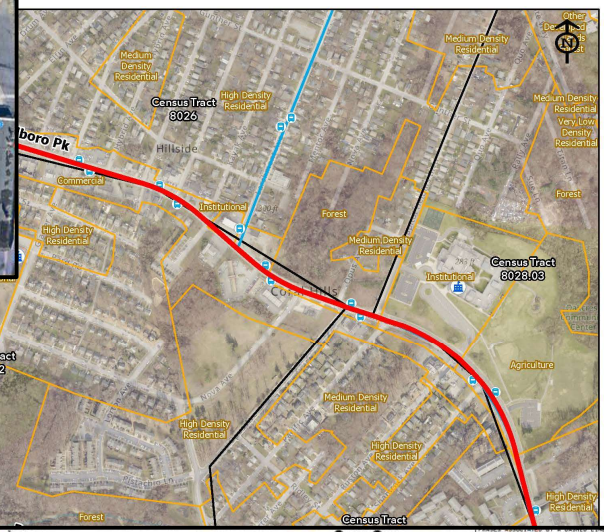
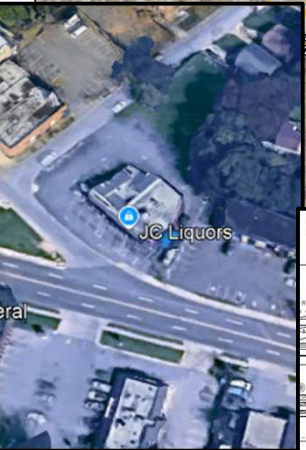
# Marlboro Pk., Pedestrian Safety Improvements Ph. 2, CIP Project

---

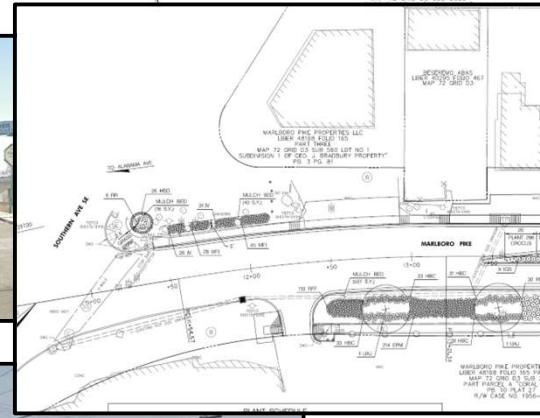
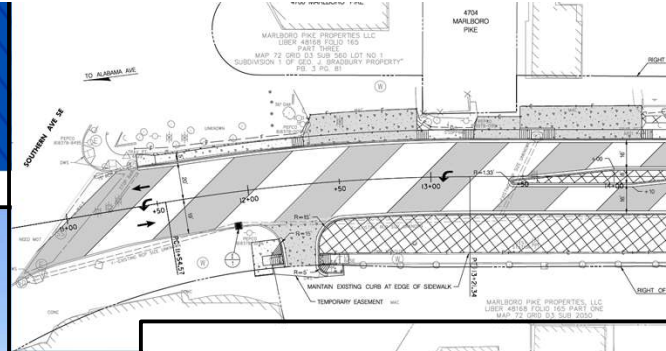
Proud to Pave the Way  
Multi-Modal Projects on the High Injury Network  
Sub-project #1 of 7



# PROJECT LIMITS



5 Signal Reco  
2 RRFBs  
2 SWM facilit  
50 new LED I







Tara H. Jackson  
Acting County Executive



Michael D. Johnson, P.E.  
Director

# Langley Park Pedestrian-Bike Access Project

---

Proud to Pave the Way  
Multi-Modal Projects on the High Injury Network  
Sub-project #2 of 7



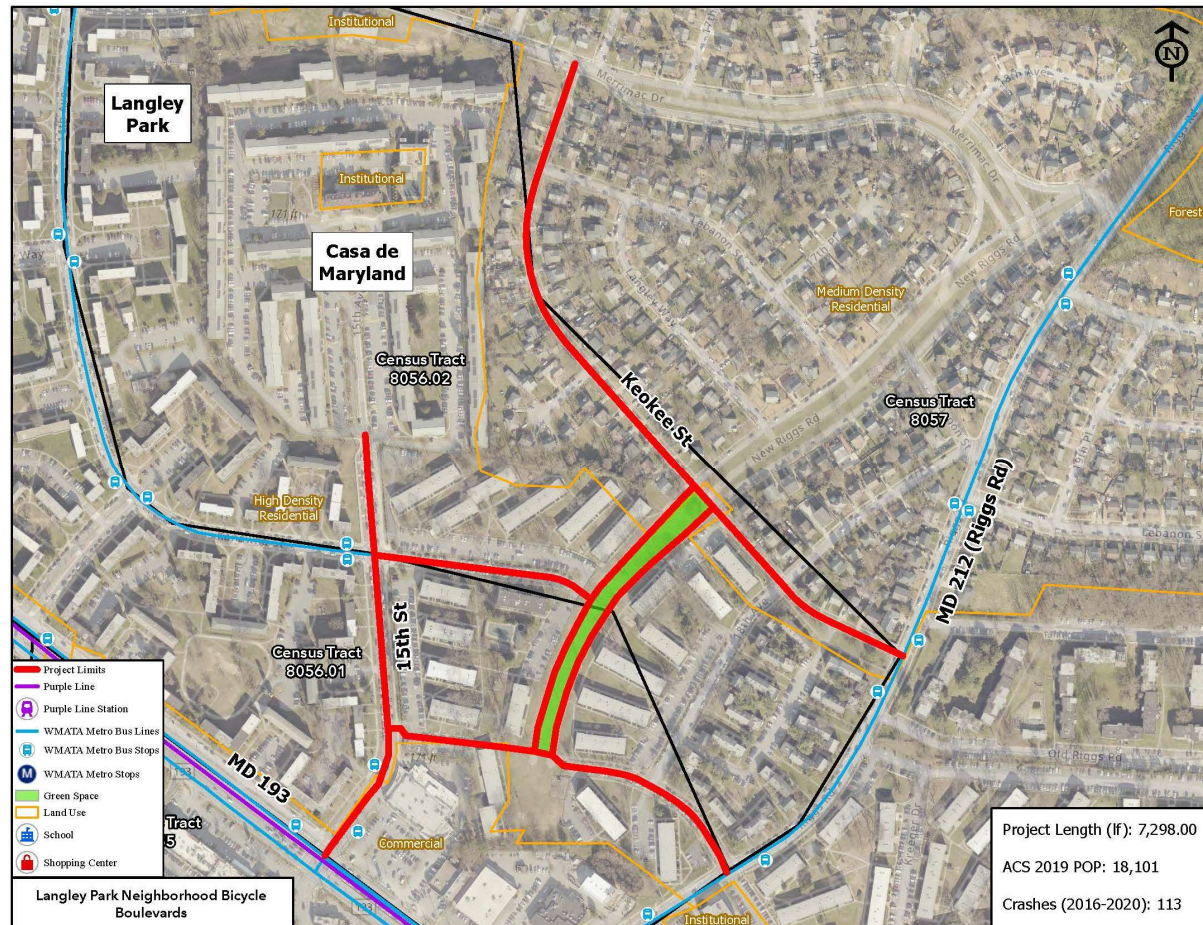


Tara H. Jackson  
Acting County Executive

# PROJECT LIMITS



Michael D. Johnson, P.E.  
Director







Tara H. Jackson  
Acting County Executive

# PROJECT PHOTOS



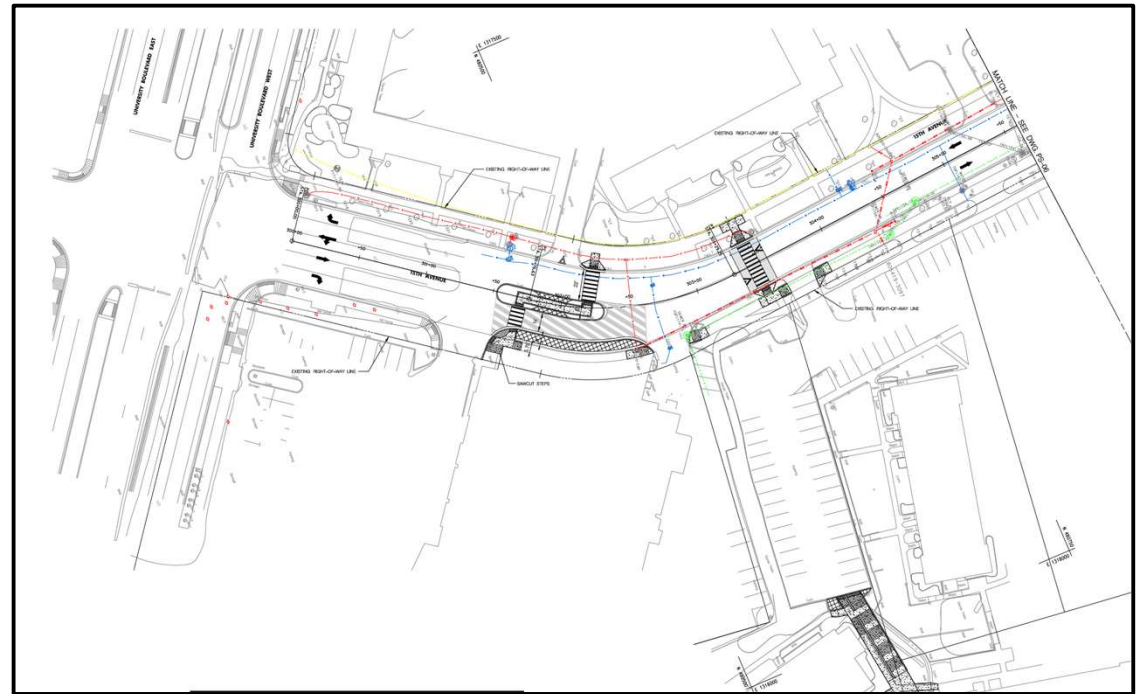
Michael D. Johnson, P.E.  
Director







**Michael D. Johnson, P.E.**  
*Director*







Tara H. Jackson  
Acting County Executive

# SAMPLE PLAN



Michael D. Johnson, P.E.  
Director







Tara H. Jackson  
Acting County Executive



Michael D. Johnson, P.E.  
Director

# Cool Spring- Adelphi Pedestrian- Bike Access Project

---

Proud to Pave the Way  
Multi-Modal Projects on the High Injury Network  
Sub-project #3 of 7



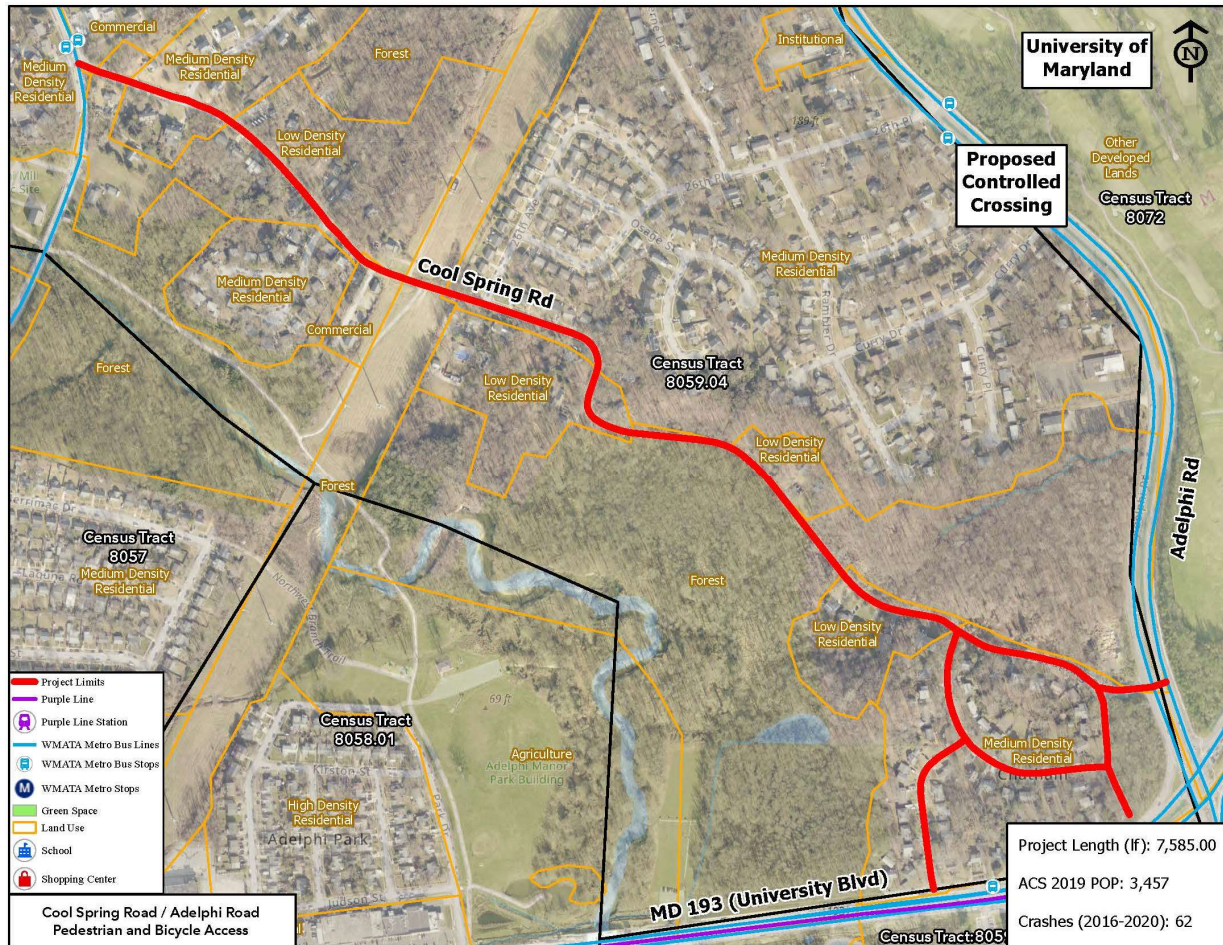


Tara H. Jackson  
Acting County Executive

# PROJECT LIMITS



Michael D. Johnson, P.E.  
Director







Tara H. Jackson  
Acting County Executive

# PROJECT PHOTOS



Michael D. Johnson, P.E.  
Director





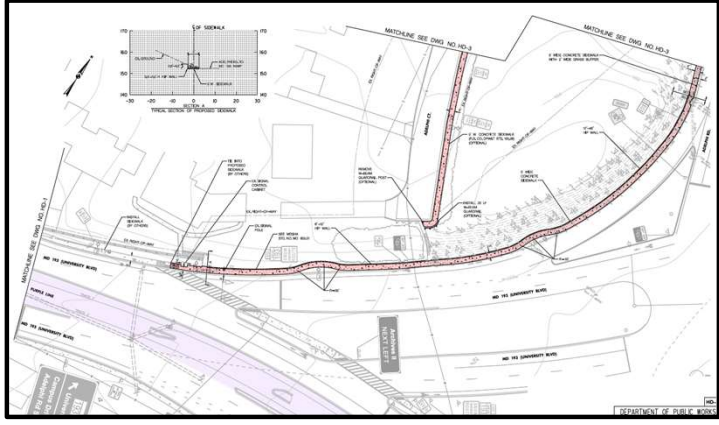
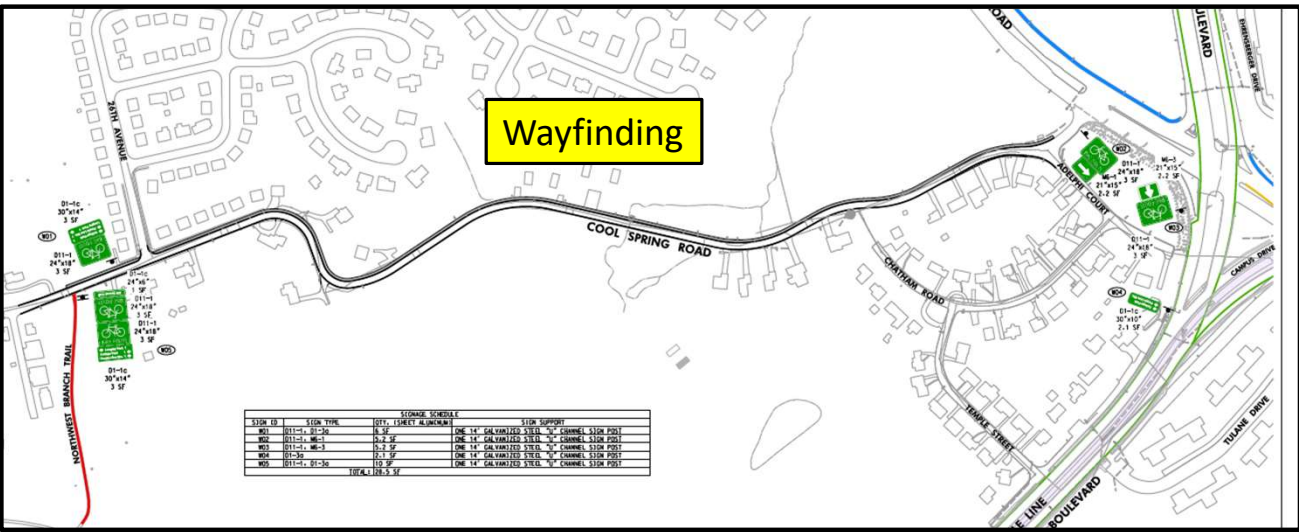


Tara H. Jackson  
Acting County Executive

# SAMPLE PLANS



Michael D. Johnson, P.E.  
Director







Tara H. Jackson  
Acting County Executive



Michael D. Johnson, P.E.  
Director

# Sheriff Rd. Safety Improvement Project

---

From Eastern Avenue (DC line) to Glen Willow Drive

Proud to Pave the Way  
Multi-Modal Projects on the High Injury Network  
Sub-project #4 of 7



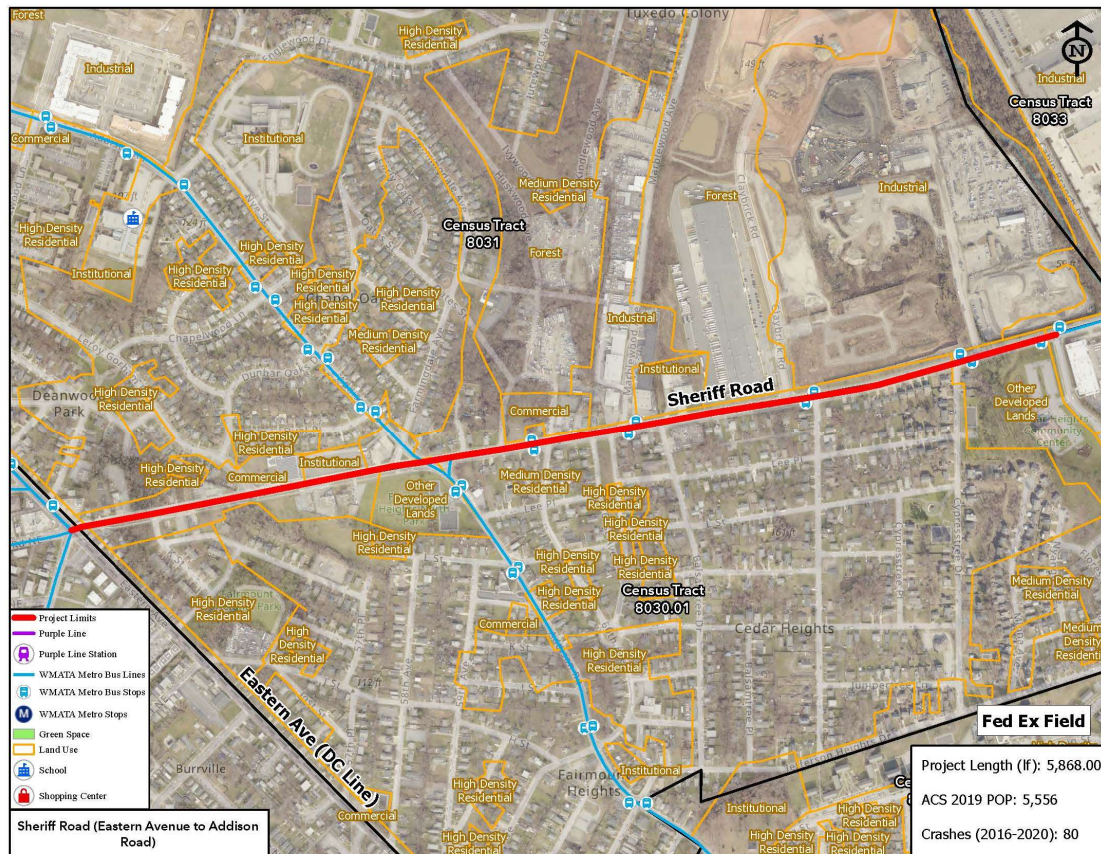


Tara H. Jackson  
Acting County Executive

# PROJECT LIMITS



Michael D. Johnson, P.E.  
Director







Tara H. Jackson  
Acting County Executive

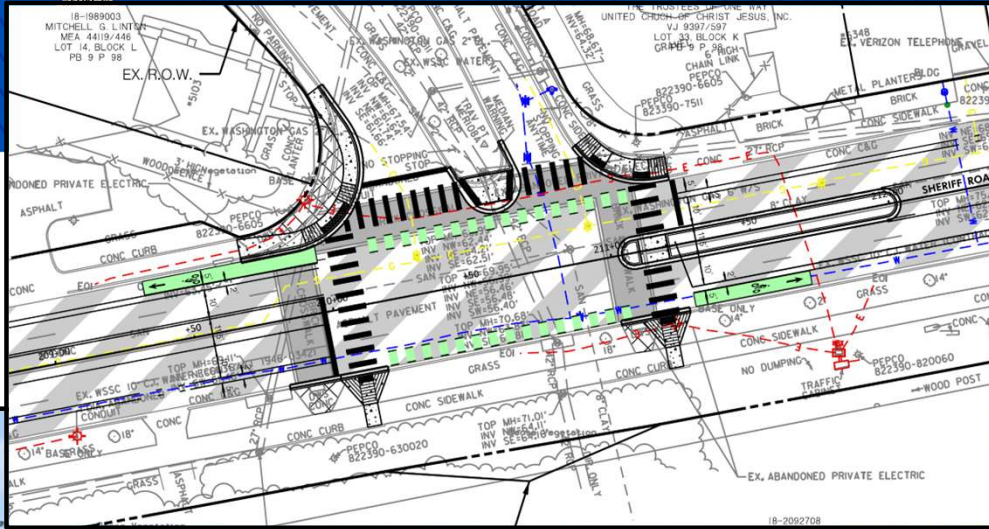
# PROJECT PHOTOS



Michael D. Johnson, P.E.  
Director



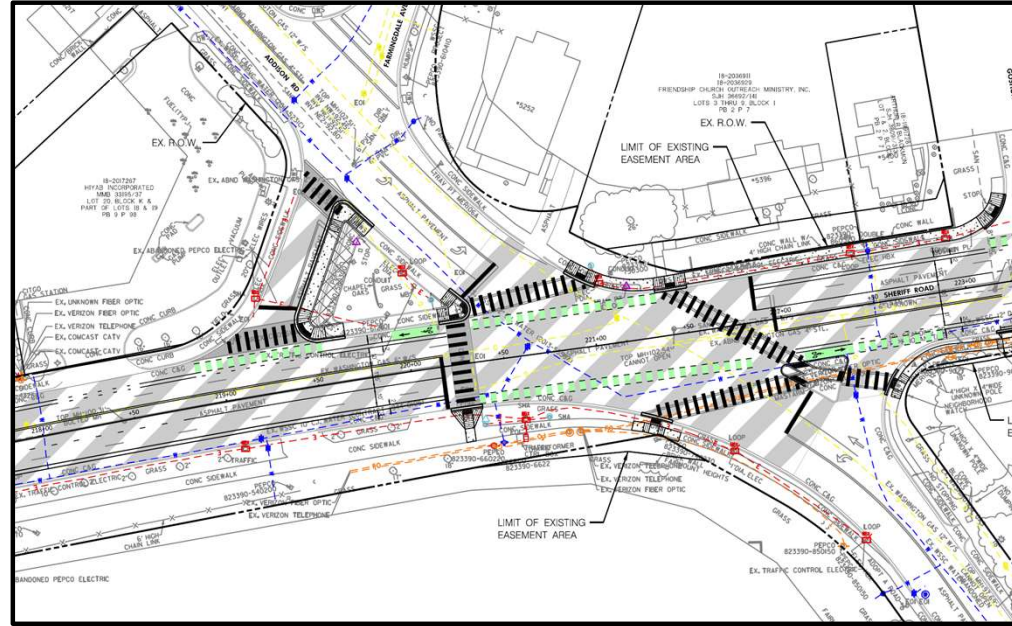




# PLAN



Michael D. Johnson, P.E.  
Director







Tara H. Jackson  
Acting County Executive



Michael D. Johnson, P.E.  
Director

# Belcrest Rd. Safety Improvement Project

---

From Queens Chapel Road (MD 500) to Adelphi Road

Proud to Pave the Way  
Multi-Modal Projects on the High Injury Network  
Sub-project #5 of 7





Tara H. Jackson  
Acting County Executive

# PROJECT LIMITS



Michael D. Johnson, P.E.  
Director







Tara H. Jackson  
Acting County Executive

# PROJECT PHOTOS



Michael D. Johnson, P.E.  
Director







Tara H. Jackson  
Acting County Executive

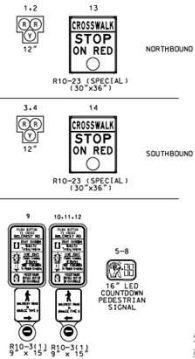
# SAMPLE PLAN



Michael D. Johnson, P.E.  
Director

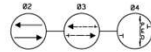
## HAWK SIGNAL

### SIGNAL AND SIGN DISPLAY

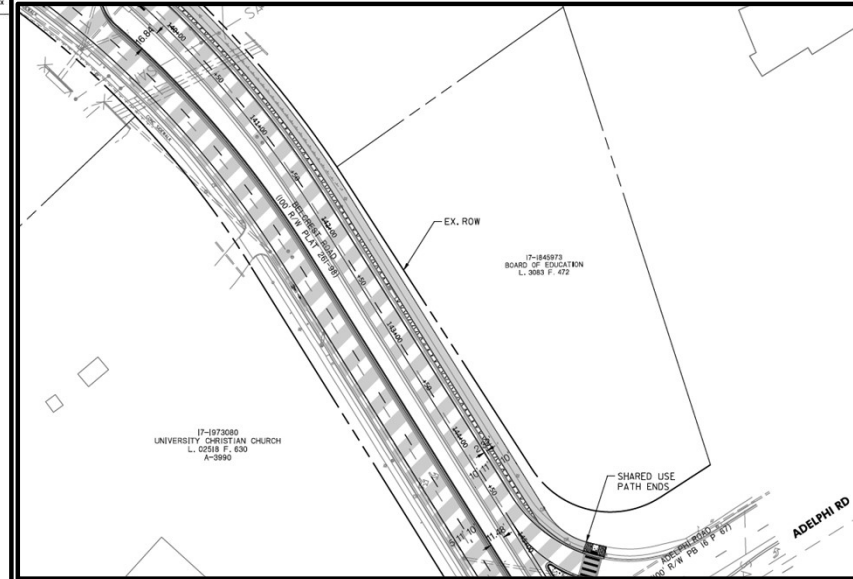
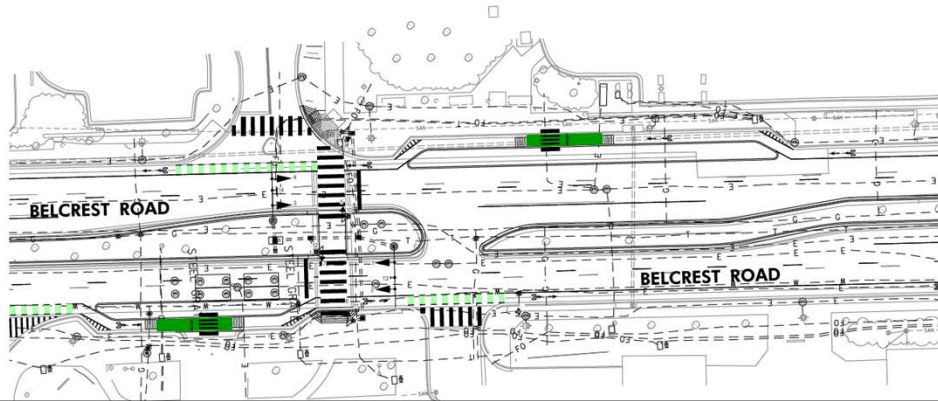


NOTE: BELCREST ROAD IS CONSIDERED TO RUN IN A NORTH-SOUTH DIRECTION

### SEMA PHASING



NOTE: PHASES ASSOCIATED BY A DASHED LINE WILL OPERATE CONCURRENTLY. PHASES ASSOCIATED BY A SOLID LINE WILL NOT OPERATE CONCURRENTLY.







Tara H. Jackson  
Acting County Executive



Michael D. Johnson, P.E.  
Director

# Adelphi Rd., Roadway Improvement CIP Project

---

Cool Spring Road to East-West Highway (MD 410)

Proud to Pave the Way  
Multi-Modal Projects on the High Injury Network  
Sub-project #6 of 7



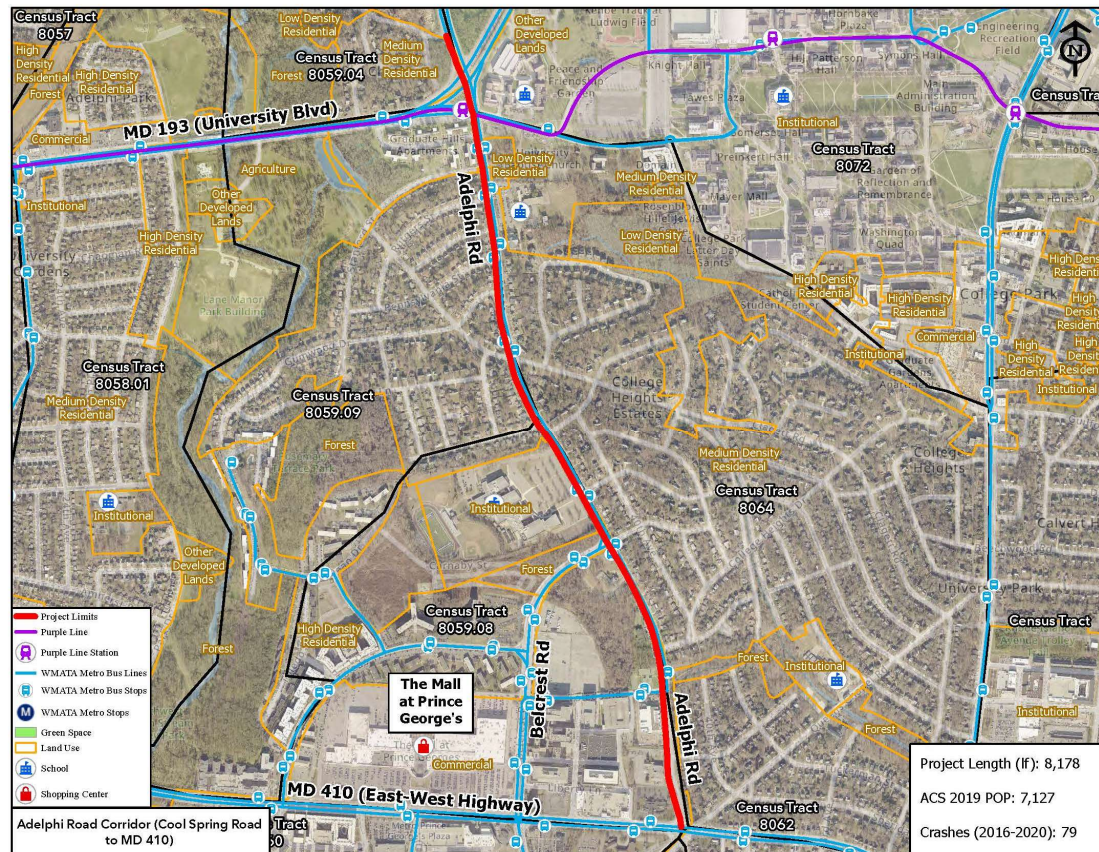


Tara H. Jackson  
Acting County Executive

# PROJECT LIMITS



Michael D. Johnson, P.E.  
Director







Tara H. Jackson  
Acting County Executive

# PROJECT PHOTOS



Michael D. Johnson, P.E.  
Director





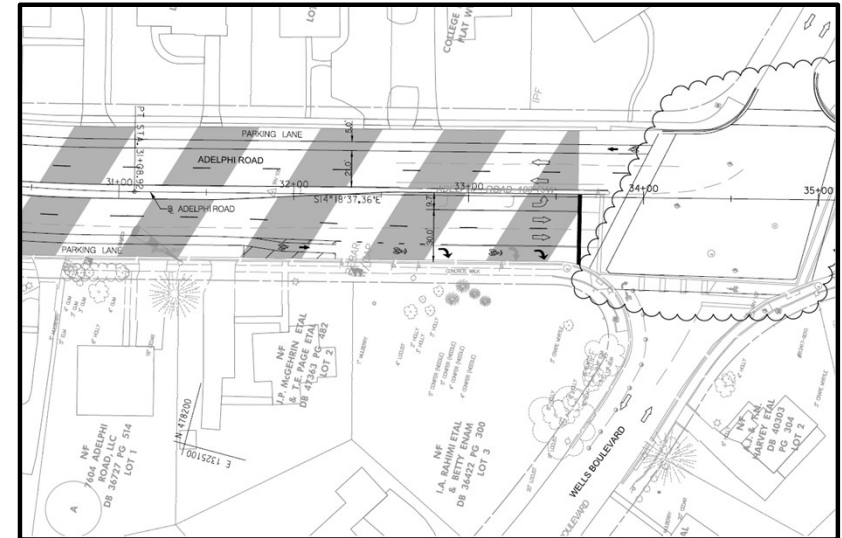
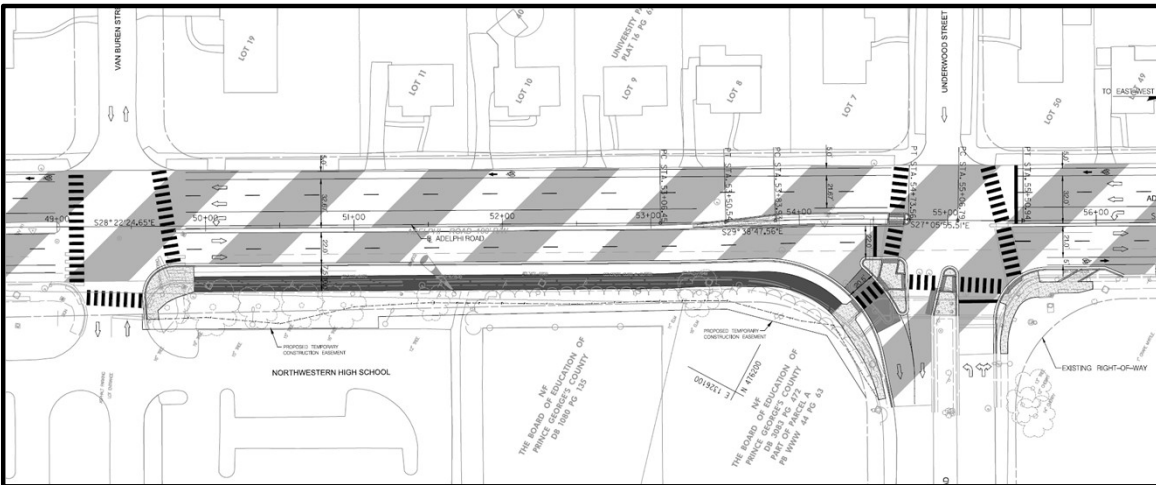


Tara H. Jackson  
Acting County Executive

# SAMPLE PLAN



Michael D. Johnson, P.E.  
Director







Tara H. Jackson  
Acting County Executive



Michael D. Johnson, P.E.  
Director

# Metzerott Rd., Adelphi Rd. to MD 193, Pedestrian Safety CIP Project

---

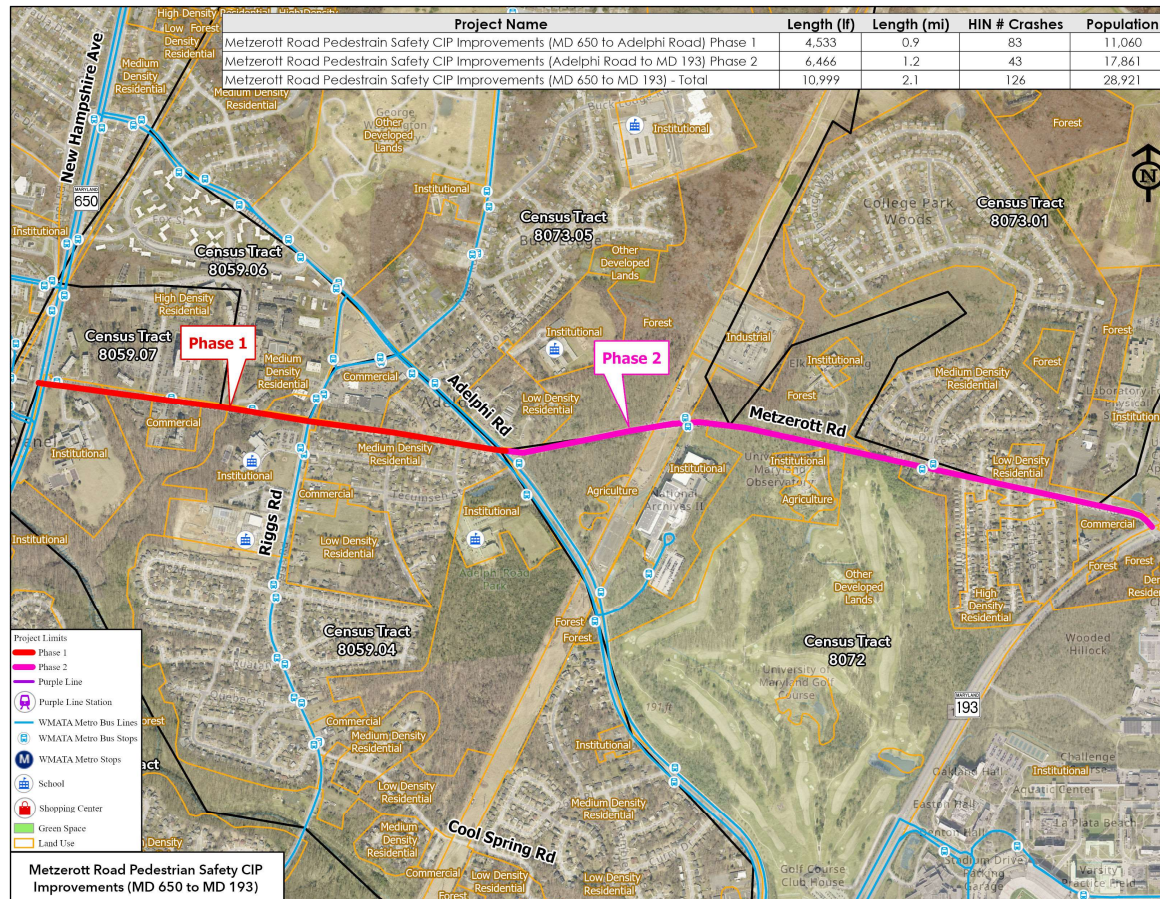
## Adelphi Road to MD 193

Proud to Pave the Way  
Multi-Modal Projects on the High Injury Network  
Sub-project #7 of 7





## PROJECT LIMITS







Tara H. Jackson  
Acting County Executive

# PROJECT PHOTOS



Michael D. Johnson, P.E.  
Director





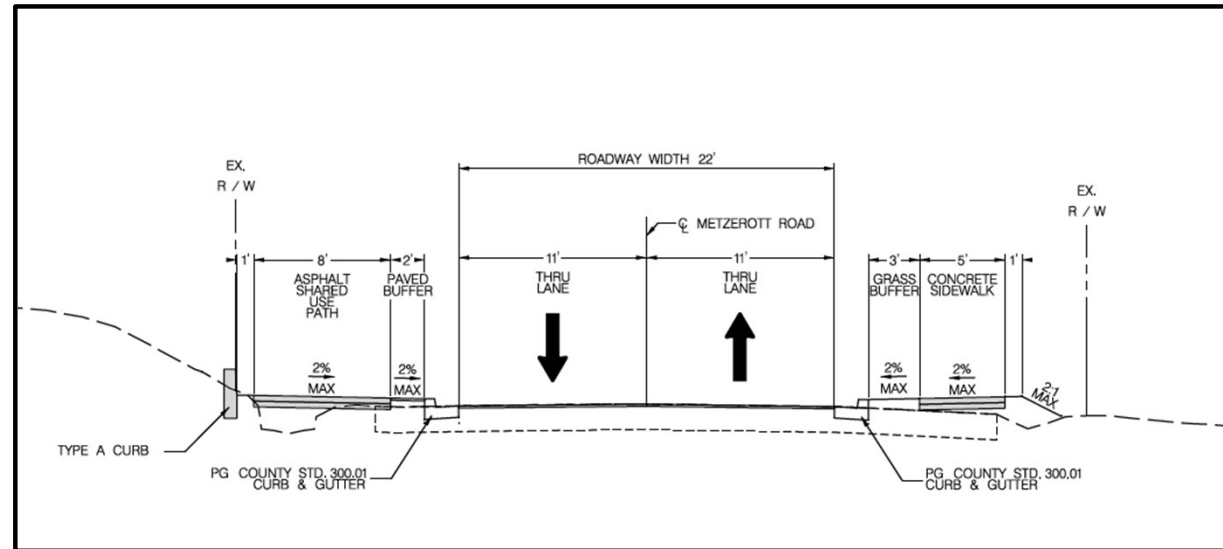
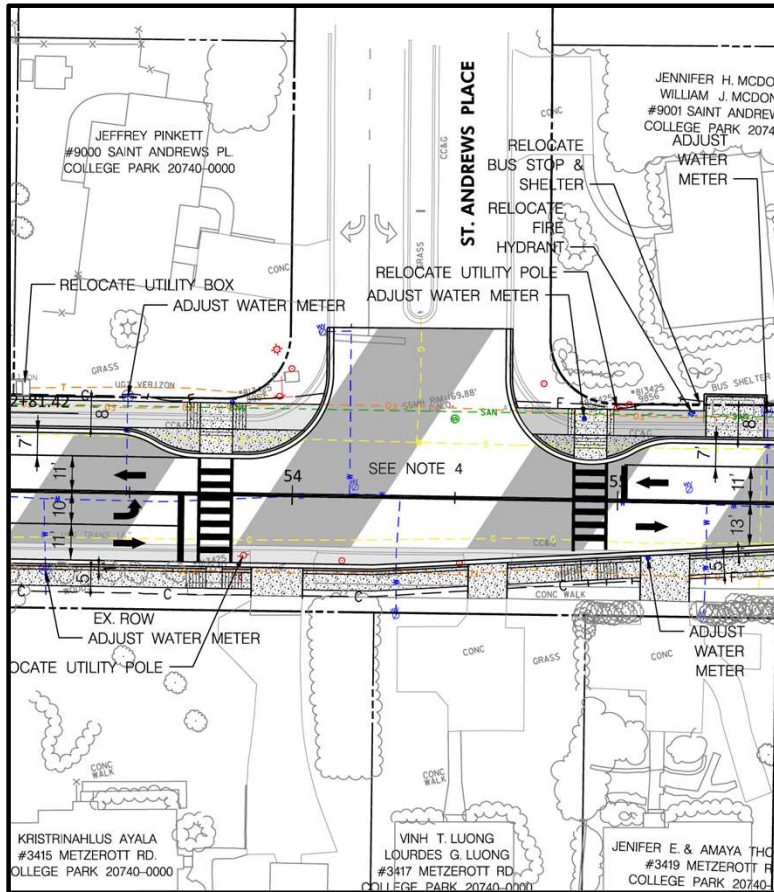


Tara H. Jackson  
Acting County Executive

# SAMPLE PLAN



Michael D. Johnson, P.E.  
Director







Tara H. Jackson  
Acting County Executive

# SCHEDULE



Michael D. Johnson, P.E.  
Director

TASK DESCRIPTION	DATES
NTP / Kick-off	COMPLETE
BASIC EXISTING CONDITIONS PLAN/ FIELD MEETINGS	COMPLETE
Topographic Survey / Utility Research / Right-of-way mosaic	NOW
Meetings with Local Community	Late 2024 to Early 2025
30% PLANS	Mid 2025
Complete Design and Permitting	CY 2026
Advertise Construction Contract	Late 2027
Start Construction	CY Early 2028
Complete Construction	CY 2028 / Early 2029





Tara H. Jackson  
Acting County Executive

# CONTACTS



Michael D. Johnson, P.E.  
Director

## POINTS OF CONTACT DURING DESIGN:

### **Erv Beckert, P.E.**

Chief, Highway and Bridge Design Division

Mobile: 240-508-9610

Email: [etbeckert@co.pg.md.us](mailto:etbeckert@co.pg.md.us)

### **Stephanie Walder**

DPW&T Project Manager

Mobile: 240-204-0353

Email: [SAWalder@co.pg.md.us](mailto:SAWalder@co.pg.md.us)

## POINTS OF CONTACT DURING CONSTRUCTION:

### **Dwight Joseph**

DPW&T Project Manager

Phone: 301-883-5633

Email: [DJoseph@co.pg.md.us](mailto:DJoseph@co.pg.md.us)







Michael D. Johnson, P.E.  
*Director*

Proud to Pave the Way  
Multi-Modal Projects on the High Injury Network

**THANK YOU!**

**QUESTIONS?**